



PROJECT MUSCULAR COORDINATION UNDER FATIGUE
ROWMARK SKI RACING MAGAZINE SCIENCE CORNER
Rowland Hall School

SKI RACING MAGAZINE ARTICLES 2025-2026





TABLE OF CONTENTS

TABLE OF CONTENTS.....	2
INTRODUCTION.....	2-3
BACKGROUND.....	4-5
IMPLICATIONS & ACTIONS.....	5-6
SUMMARY & FINAL THOUGHTS.....	7

INTRODUCTION

Muscle fatigue has challenged researchers for over a century. Today, it is understood that different mechanisms contribute to fatigue depending on the type and intensity of exercise. In high-intensity activities such as alpine ski racing — which typically involves maximal effort for 1–2 minutes — fatigue has been linked to an increase in extracellular potassium (K^+ , an ion that carries electrical signals in muscle). This increase reduces muscle fiber excitability, contributing to a decline in performance.

More recent research identifies another key contributor: the accumulation of inorganic phosphate (P_i , a byproduct of energy breakdown in cells). P_i builds up during intense activity due to the breakdown of creatine phosphate and has been shown to impair both force production and contraction velocity at the molecular level. After periods of intense training, athletes often show improved ability to perform repeated high-intensity efforts. This adaptation may be due to enhanced regulation of K^+ across the muscle membrane, possibly driven by increased Na^+/K^+ pump (a transport system that restores ion balance in cells) capacity.

Alpine skiing presents unique physiological demands due to the sport's requirement for sustained, high-force eccentric muscle contractions (muscle lengthening under tension). These occur as the skier continuously controls vertical displacement and generates kinetic energy through the turns. The leg extensor muscles are primarily active during the turning phase, where forces are influenced by the skier's weight, speed, and the radius of each turn.



Skiing on icy surfaces introduces additional fatigue factors, including aggressive vibrations and irregular muscular contractions. These can interfere with muscle coordination as fatigue builds. Eccentric muscle activity during skiing is particularly affected by Pi accumulation, which impairs cross-bridge cycling (the sliding of actin and myosin proteins that generates contractions) by interfering with the release step in the actin-myosin interaction. Elevated Pi levels also reduce calcium sensitivity in muscle fibers, making it harder for calcium ions (Ca^{2+} , the signal that triggers contractions) to initiate contractions effectively. This occurs through the effect Pi has on the troponin-tropomyosin complex (proteins that regulate actin-myosin interaction) and the kinetics of the cross-bridge cycle.

Electromyography (EMG, a test that measures electrical activity in muscle) studies of alpine disciplines such as Super-G, giant slalom, and slalom show a dominance of eccentric over concentric muscle actions, both in intensity and duration. Since eccentric contractions produce greater force at the same EMG intensity, muscle strain and mechanical load increase. Combined with the rapid alternation between concentric and eccentric contractions, this contributes significantly to fatigue and reduces the skier's ability to maintain accurate neuromuscular control.

BACKGROUND

Fatigue is a significant factor in alpine ski racing and directly impacts both performance and injury risk — particularly toward the end of a race. Muscle contractions in skiing are not only concentric and eccentric but also occur in rapid oscillations, often switching direction quickly in response to terrain and snow conditions. These quick changes require high levels of neuromuscular precision, which decline as fatigue sets in.

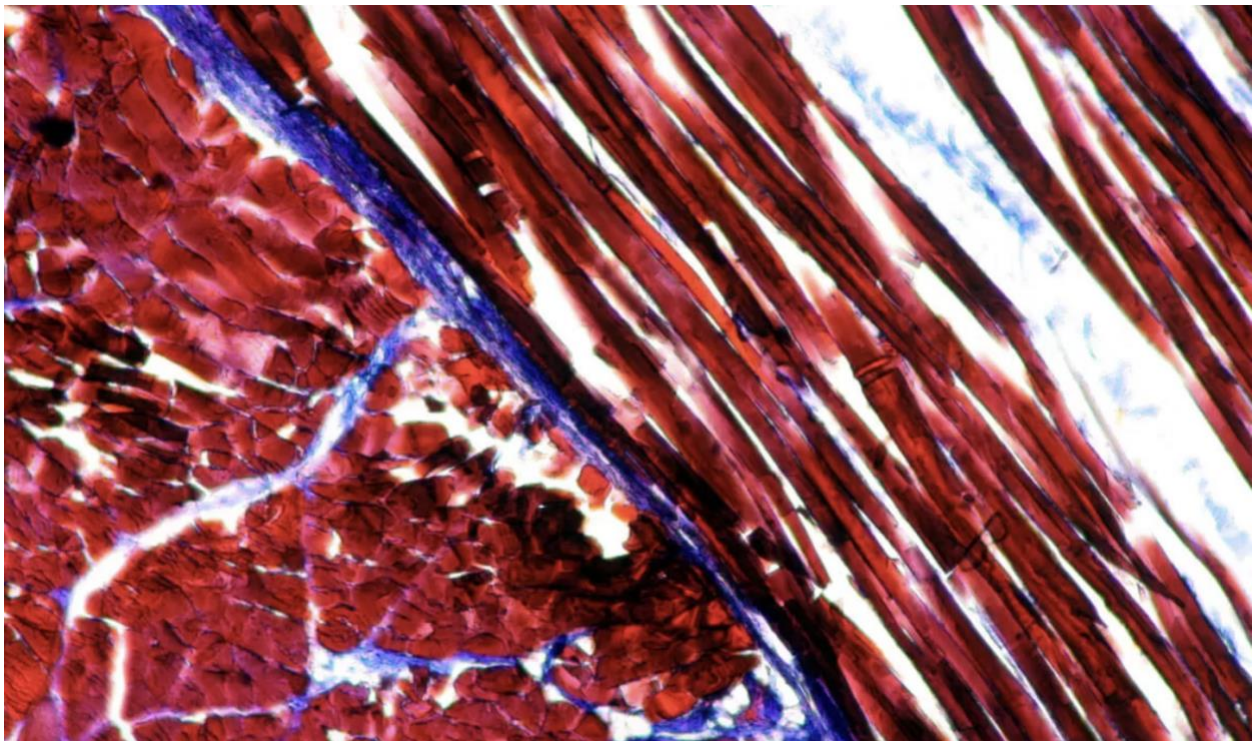
Recent research from the International Ski and Snowboard Federation (FIS) and other institutions suggests that a large proportion of ski racing injuries occur in the final portion of a race. While exact numbers may vary, some studies indicate that up to 75 percent of injuries happen in the last quarter of the course. This pattern highlights a clear link between accumulated fatigue and an increased risk of injury — especially as neuromuscular control diminishes.

Physiologically, alpine skiing demands high-intensity muscular effort, often exceeding the aerobic capacity of the athlete, and relies heavily on anaerobic metabolism. This results in the accumulation of metabolic byproducts, including inorganic phosphate (Pi, a byproduct of energy breakdown in cells), extracellular potassium (K^+ , an ion that carries electrical signals in muscle), and hydrogen ions (H^+ , which contribute to acidity in muscle tissue), all of which reduce the muscle's ability to contract efficiently.



The concept of acidosis — a drop in muscle pH — occurs during anaerobic glycolysis and has long been thought to impair muscle contractility. While lactic acid production is often blamed, it is actually the associated decrease in pH that interferes with muscle function. Acidic conditions lower the calcium-binding affinity of troponin C (TnC, a protein that binds calcium to trigger contractions), meaning more calcium is required to initiate contractions. The presence of troponin I (TnI, a protein that reduces calcium binding to weaken contractions) further amplifies this effect, weakening the interaction between TnC and the rest of the contractile mechanism. This reduction in calcium sensitivity leads to impaired coordination and decreased force production.

Although lactate accumulation and associated acidosis were once believed to be the primary cause of fatigue, more recent evidence points to inorganic phosphate as a more significant contributor. Pi accumulation impairs the release of calcium from the sarcoplasmic reticulum (SR, the cell's calcium store). It reduces the number and strength of actin-myosin cross-bridges (the molecular links that generate contractions), which are essential for muscle function.





Ski racing involves constant changes in terrain, snow consistency, and body position, requiring skiers to alternate rapidly between eccentric, concentric, and quasi-isometric (near-static under tension) muscle contractions. As these contractions become less efficient due to fatigue, the precision of ski-snow interaction drops. This can result in reduced edge control, delayed reactions, and impaired turning mechanics — all of which directly affect performance and increase the likelihood of crashes or injuries.

As described earlier in this article, while lactic acid and muscle acidosis have historically been considered the main causes of fatigue, current research supports a shift in focus toward Pi (inorganic phosphate, a byproduct of energy breakdown in cells) as a more potent and direct disruptor of muscle function during high-intensity efforts. In the context of alpine skiing, where explosive strength, control, and rapid muscular adaptation are essential, understanding and mitigating the impact of Pi accumulation is critical for both performance optimization and injury prevention.

Given the strong link between muscle fatigue — particularly Pi accumulation — and ski performance, developing targeted training strategies is essential for improving fatigue resistance and recovery. Coaches, athletes, and sport scientists can implement several approaches. One important consideration is to design training programs that enhance the removal of fatigue-inducing byproducts, particularly as the competitive season approaches. Examples are presented below as training targets and intentions.

1. Improving Metabolic Capacity and Efficiency

- **Aerobic Endurance Training:**
Builds the muscle's ability to use oxygen efficiently, reducing reliance on anaerobic metabolism. This results in less Pi accumulation at a given intensity and enhances long-term performance capacity.
- **Mitochondrial Biogenesis:**
Both endurance and high-intensity interval training (HIIT) stimulate the production and efficiency of mitochondria, the cell's energy factories. This enhances the muscle's capacity for oxidative phosphorylation (the process of producing energy using oxygen in cells) and supports stronger energy production.
- **Improved Blood Flow:**
Regular aerobic training increases capillary density and vascularization (growth of small blood vessels) in the muscles, which enhances oxygen delivery and removal of metabolic byproducts like Pi and H⁺.



2. Enhancing Buffering Capacity

- **Anaerobic Sprint and Interval Training:**
These methods strengthen the body's ability to buffer hydrogen ions (H^+ , which contribute to muscle acidity).
 - **Creatine Kinase (CK) System Adaptations:**
Targeted training reinforces the CK system (an enzyme pathway that helps recycle energy in cells), which regulates ATP turnover and controls intracellular phosphate levels.
-

3. Specific Training Strategies

- **High-Intensity Interval Training (HIIT):**
HIIT improves the muscle's ability to recover phosphocreatine (the rapid energy store in muscle) and manage energy demands efficiently, allowing better tolerance to repeated high-force contractions.
 - **Strength and Resistance Training:**
These methods increase muscular resilience, phosphorus metabolism, and neuromuscular coordination — particularly during eccentric loading (muscle lengthening under force).
 - **Exercise During Hemodialysis (clinical context):**
Though more relevant to clinical populations, research shows exercise during dialysis can improve phosphate clearance.
-

4. Important Considerations

- **Individualization:**
Training plans should be tailored to each athlete's fitness level, muscle fiber profile, and physiological response to fatigue.
 - **Hydration:**
Maintaining fluid balance is essential for electrolyte homeostasis, including phosphate transport and muscle function.
 - **Nutrition:**
Adequate carbohydrate intake supports glycogen replenishment, which is vital for high-intensity performance and can limit P_i buildup. Creatine supplementation may also improve phosphocreatine availability and ATP regeneration.
-



Rowmark

SKI ACADEMY

SUMMARY

To excel in alpine ski racing, athletes must train both aerobic and anaerobic systems, emphasizing energy efficiency and phosphate management. Key adaptations include improved capillarization (growth of small blood vessels in muscle tissue) and oxygen delivery in all muscle fibers — especially fast-twitch (Type II) fibers that generate quick, powerful movements — to enhance fatigue resistance and performance. Targeted aerobic training focused on the lower limbs helps develop a more complex muscle fiber composition. This involves endurance-strength sessions of 1–3 minutes at moderate to high resistance, aiming to utilize aerobic metabolism for energy. In addition, long bouts of low-intensity aerobic work drive energy production through fat oxidation. When performed effectively, this approach builds a strong oxidative system in the muscles, which is crucial for ski racing.

FINAL THOUGHT

Rowmark Ski Academy is committed to advancing knowledge within the U.S. ski community. Through future articles in Ski Racing Magazine appendices, the Academy aims to provide valuable insights. Readers are encouraged to stay tuned for more in-depth topics.



Rowmark

SKI ACADEMY